

2022 LANEWAY PARKING

“PARKIFYING” TORONTO’S LANEWAYS

WHILE WE WAIT:
GRAB A PEN AND PIECE OF PAPER,
MINIMIZE DISTRACTIONS,
AND GET COMFORTABLE!



THE
LANEWAY
PROJECT
CREATING LANEWAYS THAT WORK

PURPOSE OF THIS MEETING

Share what Laneway Park-ing is and how The Laneway Project will be working with our community

Share how to participate and “what we need from you”

Share and clarify ideas and questions you have regarding the initiative.

KnoWonder

Questions
Fishbowl

Tools
Presentation

Breakout
Rooms

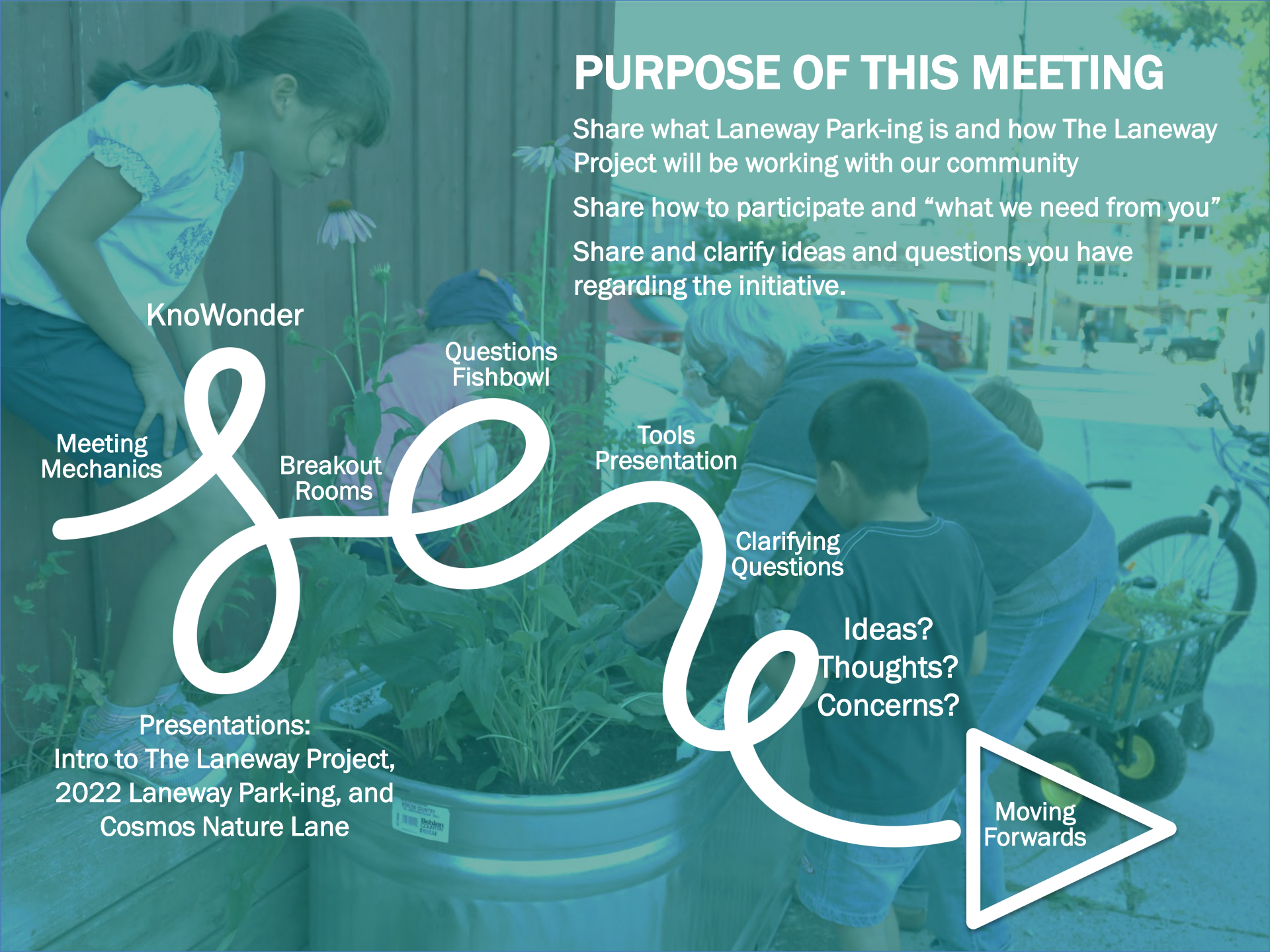
Clarifying
Questions

Ideas?
Thoughts?
Concerns?

Moving
Forwards

Meeting
Mechanics

Presentations:
Intro to The Laneway Project,
2022 Laneway Park-ing, and
Cosmos Nature Lane





KnowWonder



*Double-framed items are core elements of TLP's laneway improvement process

WHAT IS THE LANEWAY PROJECT?

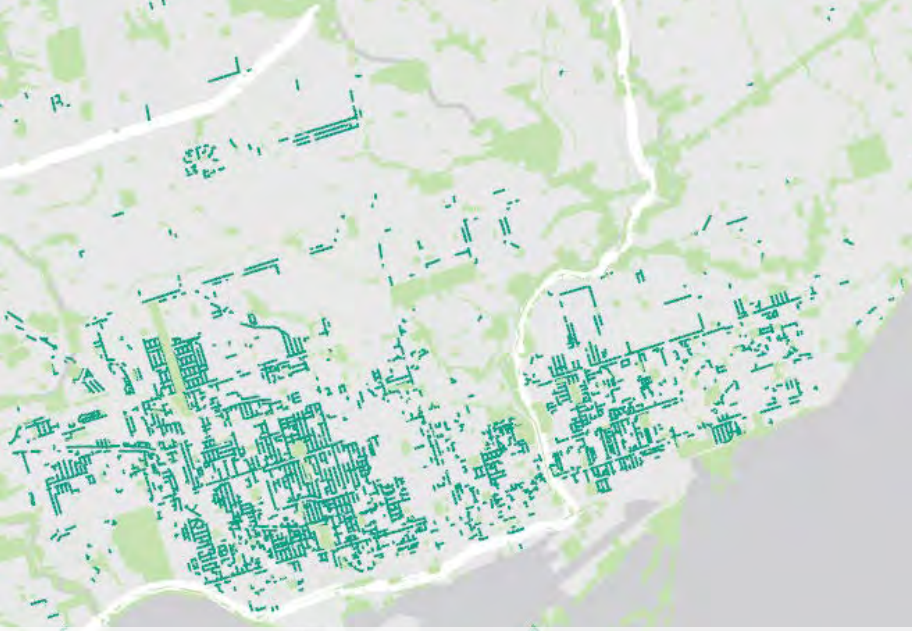
The Laneway Project is a nonprofit, full-service, multidisciplinary placemaking firm. Our mission is to transform Toronto's laneways from underutilized, utilitarian spaces into complete, vibrant, people-friendly public places. Since our founding in 2014 we have worked with over thirty communities across this city to activate and transform their local laneways, seen the integration of laneways as people-friendly places throughout the urban planning policy hierarchy (including the Official Plan, Complete Streets Guidelines, and Zoning By-Law), and developed over 20 free public planning resources to support other organizations in sharing in our mission. We are recognized internationally and have become Canada's leading expert on the community-integrated transformation of underutilized, utilitarian spaces into social infrastructure assets. We take our projects from planning through implementation and evaluation which uniquely positions us to unlock the full potential of laneways with cohesive projects while building community relationships and capacity.



2021 Laneway Park-ing in Leslieville.

LANEWAY PARK-ING

Laneway Park-ing was conceived as a COVID-response program, that would support the recovery and long-term resiliency of Main Street Neighbourhoods by transforming (or "parkifying") local laneways from underutilized, utilitarian spaces into vibrant, alternative urban green spaces to address parkland need and reattract people to the urban heart of Toronto.



Map of Toronto's Laneway Network



"COVIDiots" crowding Trinity Bellwoods Park in Summer 2020

THE PARKLAND CRISIS AND LANEWAYS

- Parks are important to community and individual health – they provide safe opportunities for people to connect to each other and nature, and invaluable ecosystem services
- The pandemic has pushed public life outdoors to an unprecedented degree, highlighting that Toronto has inadequate parkland to meet the needs of its population
- Particularly dire in Downtown and Midtown communities, the citywide provision rate is 28m²/person, but in these areas local rates fall between 0-12m²/person
- The City cannot afford to acquire enough parkland to address need – the current Downtown Parkland acquisition equals less than two football fields
- There is over 300 acres of public land in laneways across Toronto which can cost-effectively transformed into alternative urban green spaces



2021 LANEWAY PARK-ING

REALIZING POTENTIAL

Toronto's first permanent, full-coverage, traffic-calming road mural to create a safe and playful walk-to-school route for local elementary students in Leslieville.

Toronto's first Healing Corridor in Central Hospital Lane with gardens planted from contemporary Medicine Ways and a series of murals by Indigenous artists.

Aerial view of Toronto's first permanent, full-coverage, traffic-calming road mural installed as part of 2021 Laneway Park-ing in Leslieville.



Bloordale Village | Cosmos Nature Lane



Regal Heights Village | Ln E Dufferin N Rosemount

MOVING FORWARDS

2022 LANEWAY PARK-ING

This year The Laneway Project is bringing Laneway Park-ing to two new neighbourhoods! Each project will be site-specific, improvements (including green infrastructure, public art, pedestrian lighting, street furniture, and traffic-calming measures) will be adapted to create unique alternative urban green spaces that address each communities' aspirations and local parkland need.



Traffic-safety measures (2021 Laneway Parking in Central Hospital Lane, 2021)

Pedestrian lighting
(Light Up The Laneways, 2019)



Public art (Scott Helman Mural, 2019)

THE 2022 LANEWAY PARK-ING SITES WILL BE TRANSFORMED WITH...



Gardens (2021 Laneway Park-ing in Central Hospital Lane, 2021)



Wildlife Habitats and More!

PROJECT TIMELINE

Apr. – Jun.
Site Analysis &
Master Planning

Jun. – Aug.
Implementation
Planning

Aug. – Sep.
Implementation

Apr. 5: Project Kick-Off &
Site Analysis – Meeting

Apr. 23: Laneway Clean-Up

Apr. 29: Site Analysis
Toolkit Deadline

Jun.: Master Plan Delivery

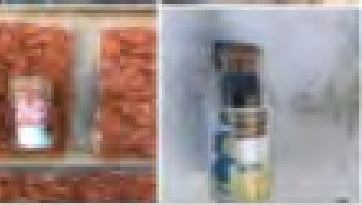
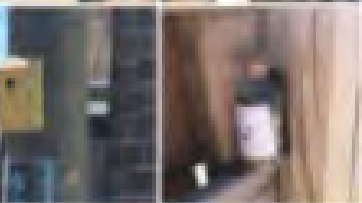
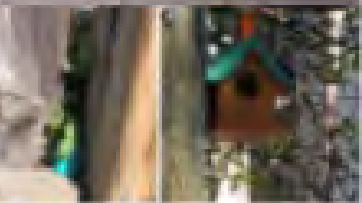
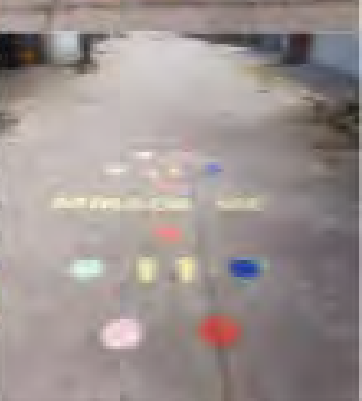
WHAT'S POSSIBLE?


- **This project is funded (~\$30,000 per site for implementation costs)**
 - We will continue to apply for funding as opportunities become available
 - The focus of this project series is “parkifying” laneways: green infrastructure, planting trees and shrubs, and public art are our funders’ priorities
 - Some funding is specific to improvement type
- **Maximizing value:**
 - Volunteering skills, labour, and connections!
- **Improvements are sited on lane-adjacent properties**
 - The main limitation to what is possible is what property owners are willing to have placed on their properties!
- **How improvements are prioritized:**
 - **Funding Requirements:** improvements need to be an eligible expense
 - **Scale:** to maximize value for the community, improvements that would otherwise be a financial or logistical burden for an individual to implement will be prioritized
 - **Longevity:** improvements that will last multiple seasons will be prioritized
 - **Enthusiasm:** of the community and the property owner where its placed



ENHANCING EXISTING EFFORTS

Cosmos Nature Lane was founded on the tenets of the circular and sharing economies and a belief that a neighbourhood can change the world around them - into one they want to see: together they have transformed their laneway into a naturalized play area with upcycled planters and gardening in marginal spaces, communal rain barrels, placemaking murals, stewardship signage, road games, and educational programming including seed collection and clean-up events. The Laneway Project with Laneway Park-ing will lend our capacity to enhance the community's existing grassroots efforts





Weekly "Lanewalks": Every Saturday 10-11 we put on our gloves and do something in the laneway:



Yearly 'Fundraisers':

- 1) Spring Compost and Soil drop
- 2) Fall Bulb Sale



Yearly Activities:

- 1) Spring Opening
- 2) Midsummer Celebration
- 3) Fall Closing



DEVELOPED BY TISHOO HAYRELAND

COSMOS COMMONS

where neighbours and nature meet

MAKE IT SWELL!

Everyone is Welcome - Make Cosmos Lane yours. We aspire to zero-waste an supporting sharing and circular economies. Please no poison, plastic or pollution

Nature Laneways (2020)

MODELS

Sharing and
Circular Economies,
Zerowaste, Enviro
stewarding,
Biomimicry

Murals and Branding -
visually beautiful,
Safety (solar lighting?)
"No poisons, plastic or
pollution please"

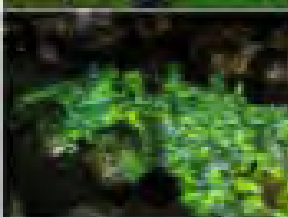
Butterfly, bee, bird,
bat, bug, beetle and
beneficials habitat and
gardens (signage)

Connection to the land
- wellbeing, enlivening
our senses. indigenous
connection to land
Facilitated walks

Education 'stations'
(at rain barrels and
special gardens? with
signage showing water,
soil, energy cycles, life
cycles, biodiversity)

Urban park-making. Urban parks are often tiny - often found in small urban corridors - like laneways. Imagine Toronto's park system linked by hundreds of nature laneways - forming a capillary-like network connecting nature and people, and bringing beauty and wellness.

LIGHTING



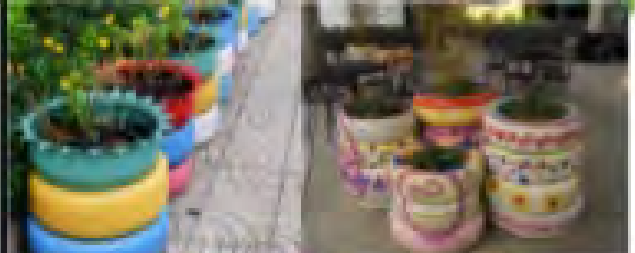
KNOWLEDGE GARDEN WE LEARN TO...
PREDICT POLES



COMMUNITY BOARDS



PLANTERS



DISCUSSION

- Are there any questions that still need answers?
- Thoughts? Ideas?
- Concerns?
- We'll be going into Break-Out Rooms
 - Groups of 2 → Groups of 4 → Main Room

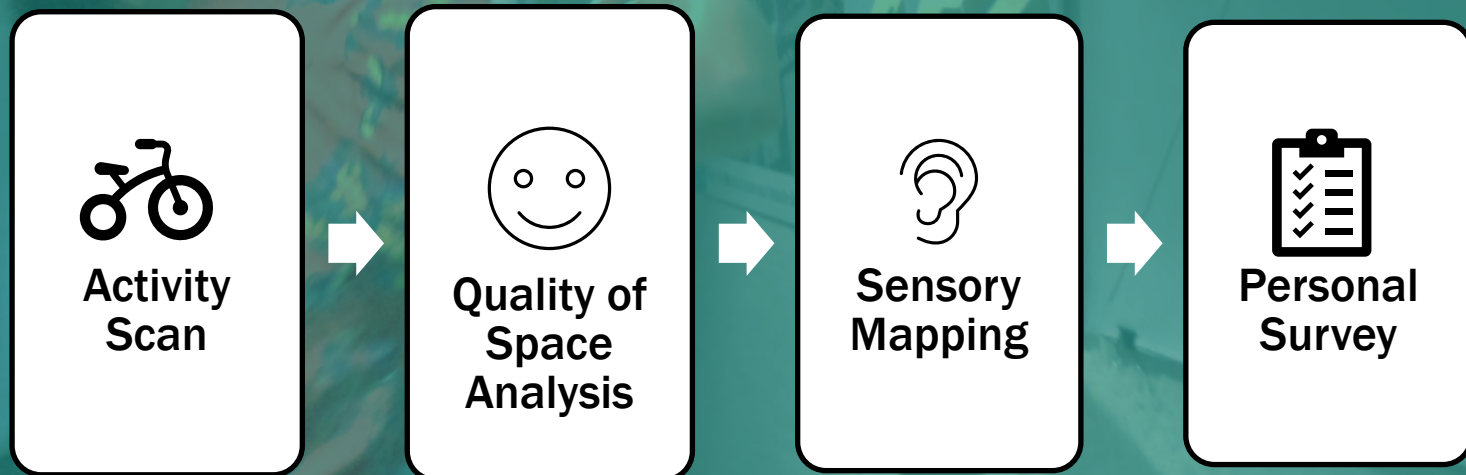
SITE ANALYSIS TOOLKIT

PURPOSE

- GATHER LOCAL KNOWLEDGE** To create a better public space, we need to understand how the community currently uses and wants to use the laneway.
- MEASURABLE** By creating a common vocabulary and system of observation we can quantify the challenges and opportunities presented by the laneway.
- ACTIONABLE** Using these tools, we can identify common objectives and priorities and actionable plans to address them.
- COMPARABLE** The information collected can be compared pre- and post-implementation and across projects to measure success and improve our processes.

SUMMARY

- The toolkit provides invaluable information regarding the community's knowledge and experience with the laneway with which to develop a master plan
- The toolkit consists of a workbook with three exercises and an online survey
- Each participant should complete the toolkit individually
- It should take you less than an hour to complete the toolkit



Laneway Activity Scan		Laneway User Number																					
Description of Laneway User		1	2	3	4	5	6	7	8	9	10	11	12	13	14	15	16	17	18	19	20	21	22
Age	0-4																						
	5-14																						
	15-29																						
	30-60																						
	60+																						
Gender	Female																						
	Male																						
	Other/Unsure																						
Activities	Travelling																						
	Playing																						
	Exercising																						
	Talking																						
	Sitting																						
	Working																						
	Other																						
Mode of Transportation if "Travelling"	Foot																						
	Using a mobility support (ex. cane or wheelchair)																						
	Carried (i.e. child in arms or stroller)																						
	Bike																						
	Motor vehicle																						
Group Size	Other																						
	1 person																						
	2 people																						
Direction if "Travelling"	3+ people																						
	North																						
	South																						
	East																						
Date:	West																						
	Field Notes:																						
Start Time/Stop Time:																							
Weather:																							
Location:																							

ACTIVITY SCAN

What it is:

- An observational study – no interaction
- Documents how the laneway is used and demographic data about laneway users
- Data will be used to measure project success – more diverse users and activities!

How to use the tool:

- Find a comfortable spot with a good view of the laneway
- Observe for a minimum of 15 minutes (record your start and end time)
- Record each person and their demographic and use profiles in a new column
- Note anything unusual under your “Field Notes”

QUALITY OF SPACE ANALYSIS

What it is:

- A personal reflection on how you feel about the laneway as a public space
- Combined with other's responses provides a base understanding of the community's perception of safety, comfort, and enjoyment of the laneway
- Helps to set project priorities

How to use the tool:

- Spend some time observing the laneway space before answering the questions.
- There are prompts for each question – answer with a happy, sad, or neutral face
- Write down comments related to your response
- Note anything unusual or not otherwise covered under your "Field Notes"

Laneway Quality of Space Analysis			
Date:		Start Time/End Time:	
Location: Cosmos Nature Lane		Weather:	
Protection	Protection from traffic: Can users safely share and move through the space?	Protection from harm by others: Is the space perceived as safe?	Protection from unpleasant sensory experiences: Is the space shielded from the elements?
	Options for mobility/accessibility: Is it easy for all users to move through the space?	Options for seeing: Are there interesting options to look at?	Options for talking/listening: Is it comfortable to stop and have a conversation here?
Comfort & Activity	Options to stand and linger (stop and stay): Does the space invite you to spend time here?	Options for sitting: Are there places to rest for a moment (informal or formal seating)?	Options for play, exercise, and activity: Is there opportunity for safe, spontaneous activity?
	Opportunities for flexible use. Is the space convenient at different times of the day? For different purposes?	Opportunities to enjoy the environment. Is there a variation in design? Attractive natural elements?	Opportunities for positive sensory experiences. Is the space enjoyable to be in? Does it stimulate your senses?
Enjoyment			
Legend		Field Notes:	
☺ = Yes			
☹ = In-Between			
☹ = No			

Laneway Sensory Mapping

Date:	Start Time/End Time:	Laneway Map
Location:	Weather:	
What do you hear? What would you like to hear? ∞ + / ∞ -		
What do you smell? What would you like to smell? Δ+ / Δ-		
What do you see? What would you like to see? ○ + / ○ -		
What do you touch? What would you like to touch? □ + / □ -		
Field Notes:		

SENSORY MAPPING

What it is:

- A record of your personal sensory experience
- Asks you to consider the laneway from multiple perspectives
- Helps identify specific areas for improvement

How to use the tool:

- Walk through the laneway and focus on how it engages your senses
- Annotate the map with a symbol for each sense
- Indicate whether it was a positive (+) or negative (-) experience.
- Describe your sense experience in the box provided
- Note anything unusual under your "Field Notes"

PERSONAL SURVEY

What it is:

- Final questions unaddressed by other tools
- More direct understanding of your laneway experience
- Opportunity to share anything else we might have overlooked

How to use the tool:

- Filled out through the survey link on website
 - Yes/No
 - Multiple Choice
 - Evaluation Sliders
 - Text Answers

5. Email

6. Would you like to join The Laneway Project's gener...

7. I am a local...

8. How often do you usually interact with your neigh...

9. How involved are you usually with local activities o...

10. Would you like to be more involved in local activit...

11. Which local activities or improvement initiatives ...

12. Do you have any skills or knowledge you would li...

13. From "not much" to "a lot," how much is the lane...

14. How often do you personally use the laneway sp...

15. Looking to the future, would you like to use the la...

16. What is something you wish you could do in this l...

17. From "Strongly negative" to "Strongly positive", h...

A group of approximately 15 people are seated in a circle on folding chairs in a room. The room features a large white bookshelf filled with books in the background, a window, and a framed picture on the wall. The entire image is overlaid with a semi-transparent teal filter. The word "QUESTIONS?" is written in large, bold, white, sans-serif capital letters across the center of the image.

QUESTIONS?

NEXT STEPS & OPPORTUNITIES TO GET INVOLVED

PROJECT SUCCESS WILL BE DEFINED BY COMMUNITY PARTICIPATION

- Complete the Site Analysis Toolkit by April 29th
- In the personal survey indicate any skills or knowledge you would like to contribute to the project
- Request an improvement to your property for consideration in the master plan by email, in the survey, or on the project website
- Come to the Laneway Clean-Up on April 23rd
- Stay tuned for the Master Plan delivery
- Volunteer to help implement the project in the fall

www.thelanewayproject.ca/laneway-parking-2022-cosmos-nature-lane

DISCUSSION

- Share in the chat:
 - What about this initiative and the possibilities are most interesting or exciting to you?
 - What do you hope most to see happen in the laneway this year?



INTERESTED IN GETTING INVOLVED OR HAVE QUESTIONS?

GET IN TOUCH

bronwen@thelanewayproject.ca or 519-729-2465



info@thelanewayproject.ca



[@lanewayproject](https://twitter.com/lanewayproject)



[/lanewayproject](https://www.facebook.com/lanewayproject)



[@lanewayproject](https://www.instagram.com/lanewayproject)